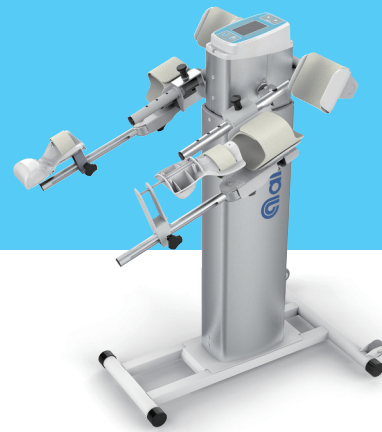
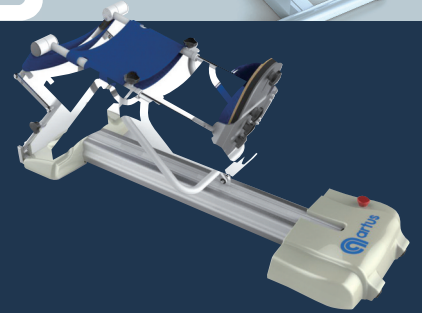
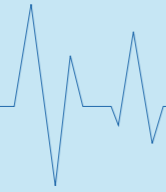


Medical Equipment

Continuous
Passive
Motion



www.cmcst.co.kr



Shoulder and Elbow CPM >> **ARTUS-703S**

Shoulder and Elbow CPM >> **ARTUS-704ES**

Simple Shoulder CPM >> **ARTUS-701ES**

Elbow CPM >> **ARTUS-501E**

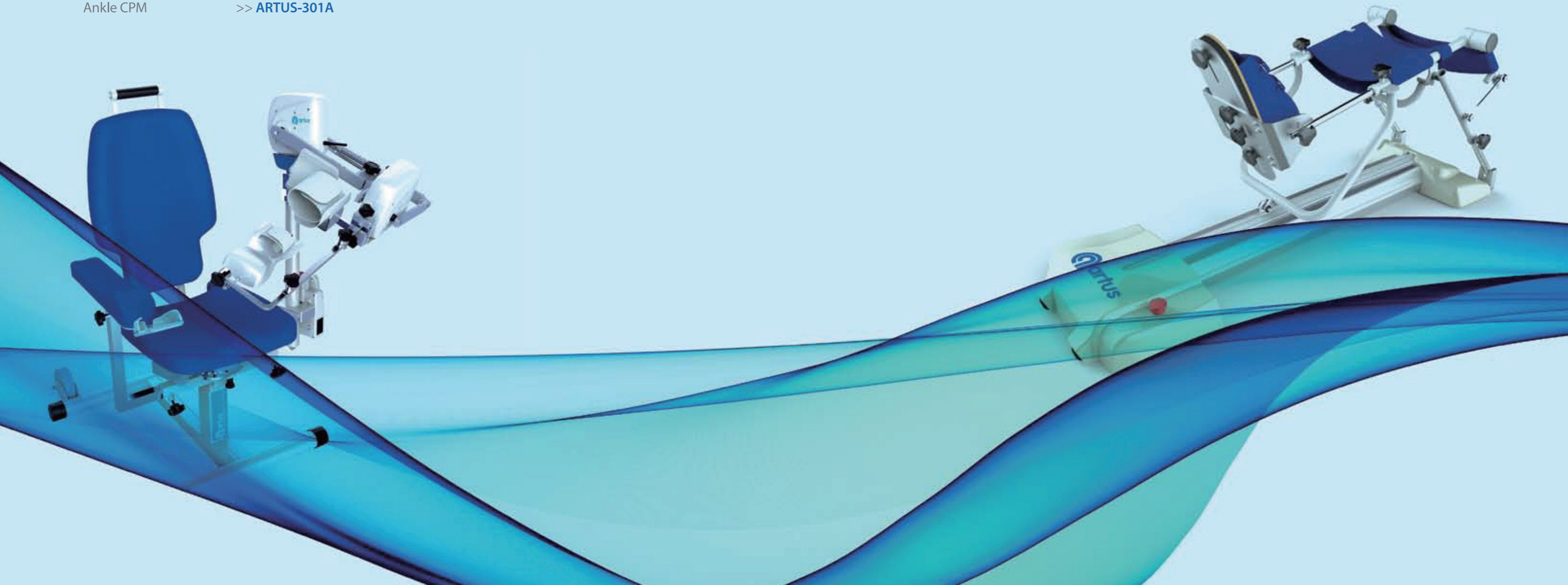
Knee CPM >> **ARTUS-903K**

Ankle CPM >> **ARTUS-301A**

Medical Equipment Continuous Passive Motion

Continuous Passive Motion

CPM is a rehabilitation equipment that recovers the lost function of joints quickly through continuous passive motion for patient who cannot exercise by themselves.



Simple Shoulder CPM

artus -703ES

- It can be used in a narrow space by changing easily left and right arm frame by front rotation method.
- Integrated structure of chair and moving frame.
- Possible to treat shoulder and elbow joint at the same time.
- Provides variety of joint exercise with easy operation.
- The height of shoulder is easy to adjust with a simple operation.

▶▶ Allows to select speed : Uniform / Accelerated mode.

▶ Easy operation with touch panel and customized LCD.

INFORMATION

Model	ARTUS-703S
Power Supply	100Vac ~ 240Vac, 50/60 Hz

FUNCTIONS

Speed	1 ~ 5	level.
Timer	1 ~ 99	min.
Count	1 ~ 99	
Pause	0 ~ 9	sec.

TECHNICAL SPECIFICATION

Flexion / Extension	20° ~ 180°	
Abduction / Adduction	20° ~ 160°	
Rotation	-60° ~ 90°	
Elbow	0° ~ 150°	
Synchronized abduction and Rotation	Flexion / Extension	20° ~ 160°
	Internal / External Rotation	-30° ~ 90°
Speed (Flexion)	60°/min ~ 200°/min	
Speed (Rotation)	75°/min ~ 200°/min	
Weight	38kg	
Dimensions (W×D×H)	706 × 647 × 925 (mm)	



Shoulder & Elbow CPM

artus -704ES

- Easy operation with customized touch screen.
- Good mobility with wheels.
- Robust structure minimizes product shake during exercise.
- Easy to transport and no mechanical caring of left and right arm frame.

▶ Progressive mode : Relieves pain by gradual increment of angle of rehabilitating exercise.

▶ It is equipped with a fixed LCD and a touch panel on the top of the product.

INFORMATION

Model	ARTUS-704ES
Power Supply	220Vac, 60Hz

FUNCTIONS

Speed	1 ~ 6	level.
Timer	1 ~ 99	min.
Count	1 ~ 99	
Pause	0 ~ 9	sec.

TECHNICAL SPECIFICATION

Shoulder	Flexion / Extension	20° ~ 180°
	Abduction / Adduction	20° ~ 160°
	Rotation	-60° ~ 90°
Elbow	Flexion / Extension	0° ~ 150°
Speed		75°/min ~ 150°/min
Weight		25kg
Height of gear shaft		790-1040mm
Dimensions (W×D×H)		565 × 690 × 950 (mm)

Simple Shoulder CPM

artus -701ES

- Portable type shoulder CPM with small size and light weight.
- Easy to transport and no mechanical caring of left and right arm frame.
- Simply adjust the height of arm-frame.

- ▶ Allows to select speed : Uniform / Accelerated mode.
- ▶ Easy operation with touch panel and customized LCD.

INFORMATION

Model	ARTUS-701ES
Power Supply	100Vac ~ 240Vac, 50/60 Hz

FUNCTIONS

Speed	1 ~ 6	level.
Timer	1 ~ 99	min.
Count	1 ~ 99	
Pause	0 ~ 9	sec.

TECHNICAL SPECIFICATION

Flexion / Extension	20° ~ 180°
Abduction / Adduction	20° ~ 160°
Speed (Flexion)	48°/min ~ 150°/min
Weight	13.5kg
Dimensions (W×D×H)	670×790×910 (mm)



Elbow CPM

artus -501E

- It can be used in a narrow space by changing easily left and right arm frame by front rotation method.
- Integrated structure of chair and moving frame.
- Possible to treat elbow and wrist joint at the same time.
- Provides variety of joint exercise with easy operation.
- The height of elbow is easy to adjust with a simple operation.
- Available to rotate (Pronation and supination exercise) of wrist.

- ▶ Progressive mode : Relieves pain by gradual increment of angle of rehabilitating exercise.
- ▶ Oscillation mode : Maximizes its therapeutic effect by repeating exercise at each end-angle.
- ▶ Allows to select speed : Uniform / Accelerated mode.
- ▶ Easy operation with touch panel and customized.

INFORMATION

Model	ARTUS-501E
Power Supply	100Vac ~ 240Vac, 50/60 Hz

FUNCTIONS

Speed	1 ~ 5	level.
Timer	1 ~ 99	min.
Count	1 ~ 99	
Flexion/Extension/Pause	0 ~ 9	sec.

TECHNICAL SPECIFICATION

Flexion / Extension	0° ~ 135°
Internal / External Rotation	-90° ~ 50°
Synchronized abduction and Rotation	Elbow 0° ~ 135° Wrist Rotation -90° ~ 40°
Speed (Elbow)	60°/min ~ 200°/min
Speed (Wrist Rotation)	75°/min ~ 200°/min
Weight	33kg
Dimensions (W×D×H)	706 × 647 × 835 (mm)

Knee CPM

artus -903K

- Portable knee CPM with small size and light weight.
- Adjustable a length of femur and tibia position.

- Progressive mode : Relieves pain by gradual increment of angle of rehabilitating exercise.
- Oscillation mode : Maximizes its therapeutic effect by repeating exercise at each end-angle.
- Allows to select speed : Uniform / Accelerated mode.
- Easy operation with touch panel and customized.

INFORMATION

Model	ARTUS-903K
Power Supply	100Vac ~ 240Vac, 50/60 Hz

FUNCTIONS

Speed	1 ~ 5	level.
Timer	1 ~ 99	min.
Count	1 ~ 99	
Pause	0 ~ 9	sec.

TECHNICAL SPECIFICATION

Femoral Size	26 ~ 45 cm.
Tibia Size	29 ~ 59 cm.
Motion Range	-10°~140°
Speed	75°~130° /min.
Angle of Progressive	5° ~ 15°
Angle of Oscillation	5° ~ 15°
Count (Progressive)	3 ~ 10
Count (Oscillation)	3 ~ 10
Weight	12kg
Dimensions (WxDxH)	360 × 1025 × 500 (mm)



Ankle CPM

artus-301A

- Portable Ankle CPM with small size and light weight.
- Easy to change exercise mode (Dorsiflexion / Plantar flexion mode, Abduction / Adduction mode)

- Progressive mode : Relieves pain by gradual increment of angle of rehabilitating exercise.
- Oscillation mode : Maximizes its therapeutic effect by repeating exercise at each end-angle.
- Allows to select speed : Uniform / Accelerated mode.
- Easy operation with touch panel and customized LCA.

INFORMATION

Model	ARTUS-301A
Power Supply	100Vac ~ 240Vac, 50/60 Hz

FUNCTIONS

Speed	1 ~ 5	level.
Timer	1 ~ 99	min.
Number of Motion	1 ~ 99	
Pause	0 ~ 9	sec.

TECHNICAL SPECIFICATION

Dorsiflexion/Plantar flexion	- 50° ~ 50°
Abduction/Adduction	- 35° ~ 35°
Speed	75° ~ 150° /min.
Angle of Progressive	5° ~ 15°
Angle of Oscillation	5° ~ 15°
Count (Progressive)	3 ~ 10
Count (Oscillation)	3 ~ 10
Weight	9kg
Dimensions (WxDxH)	353 x 467 x 430 (mm)



Hand Controller

Feature

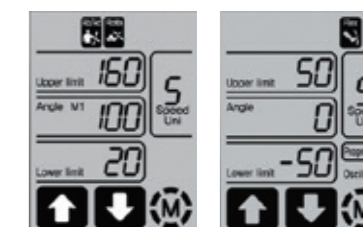
- Touch panel is adopted.
- Customized black and white LCD
 - Composition of pictorial form .
 - High visibility and high intuition.
- Easy setting. (Angle, motion, timer)
- Silicone cover for shock protection.



HAND CONTROLLER SPECIFICATIONS

ITEM	CUSTOMIZED LCD
Effective screen size (mmXmm)	70.0 X 52.5
Resolution	White & Black
Input Method	Electrostatic touch panel and switches
Direction of view	6 o'clock

Image





CONTROL SYSTEM TECHNOLOGY

www.cmcst.co.kr

Distributor



Head office

325, Daeyullaechu-gil, Bugi-myeon, Cheongwon-gu
Cheongju-si, Chungcheongbuk-do, Korea

T 82-43-212-7070

F 82-43-212-7073

Email medi@cmcst.co.kr

R&D Center
2nd Factory

9-10, Naechuoksu-gil, Bugi-myeon, Cheongwon-gu
Cheongju-si, Chungcheongbuk-do, Korea

T 82-43-212-6007

F 82-43-212-7073

Email medi@cmcst.co.kr